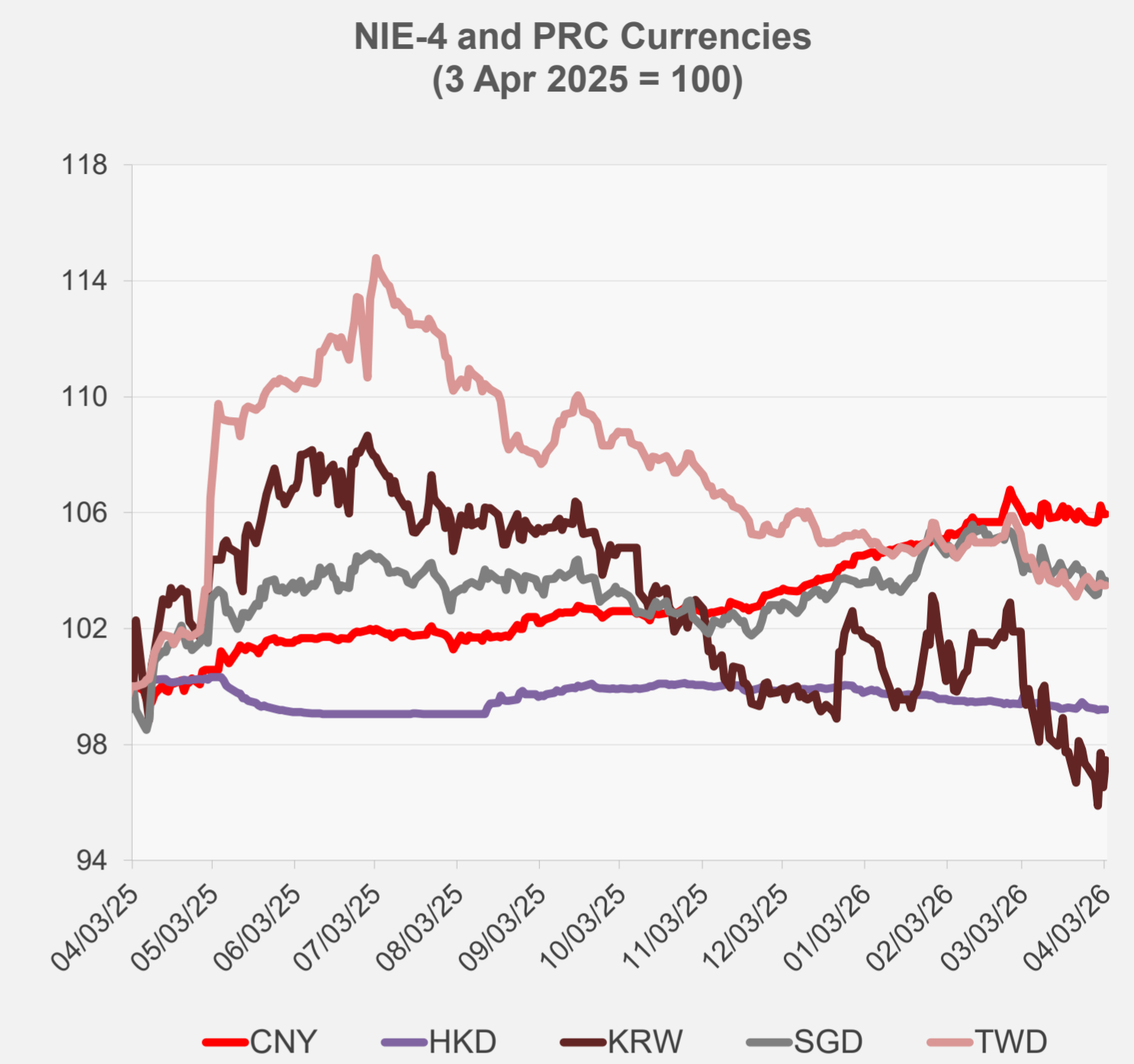
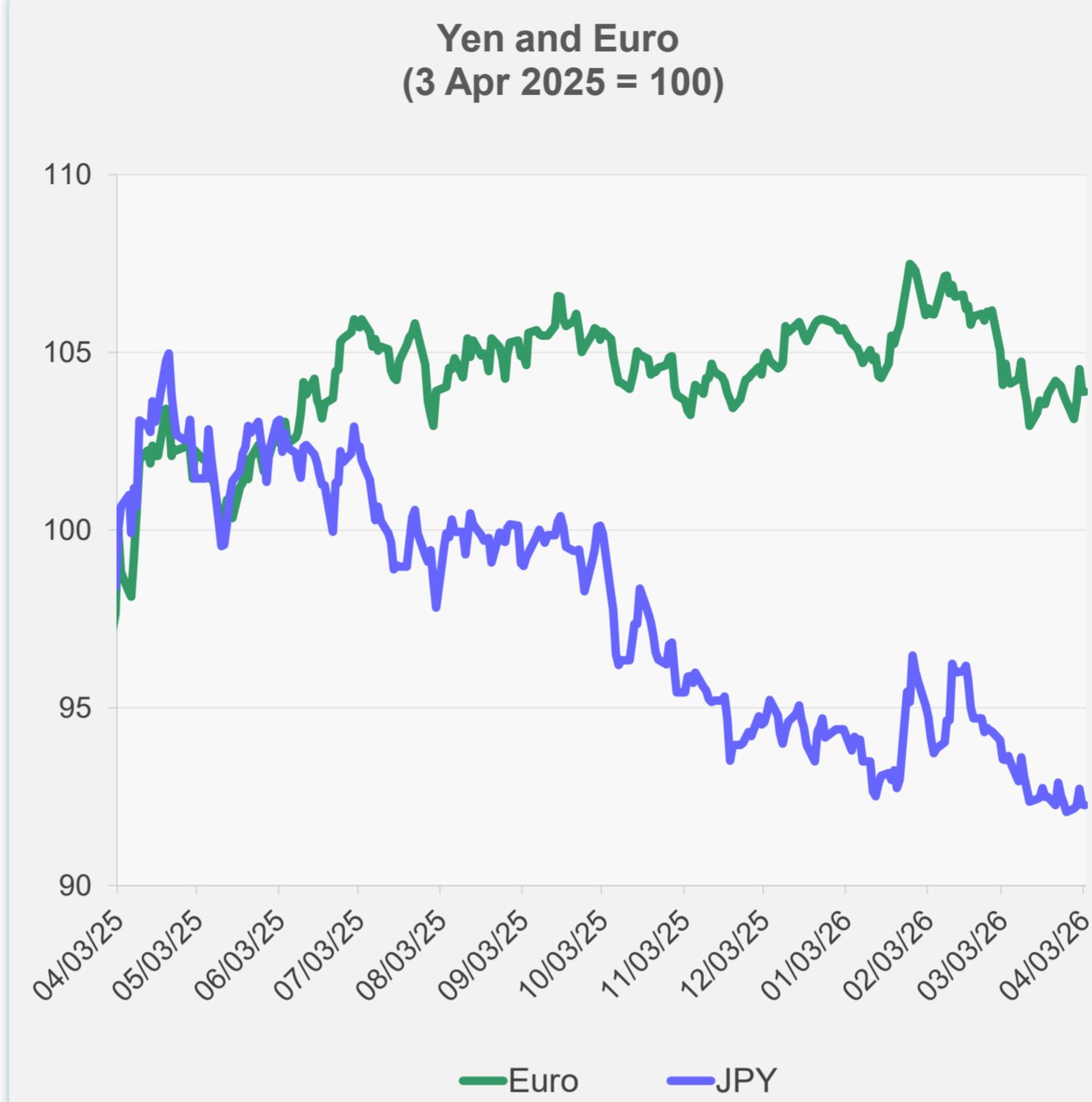
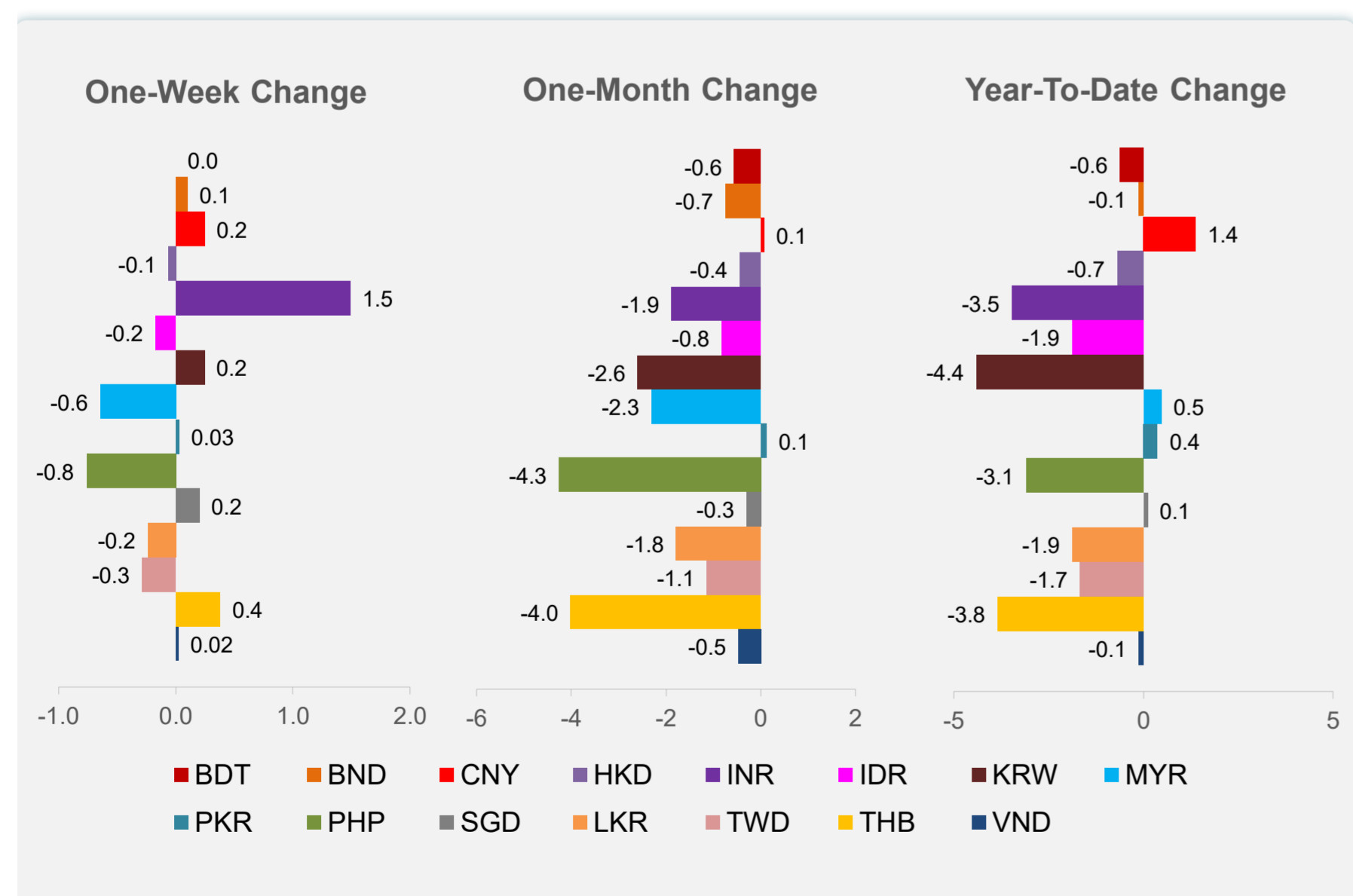
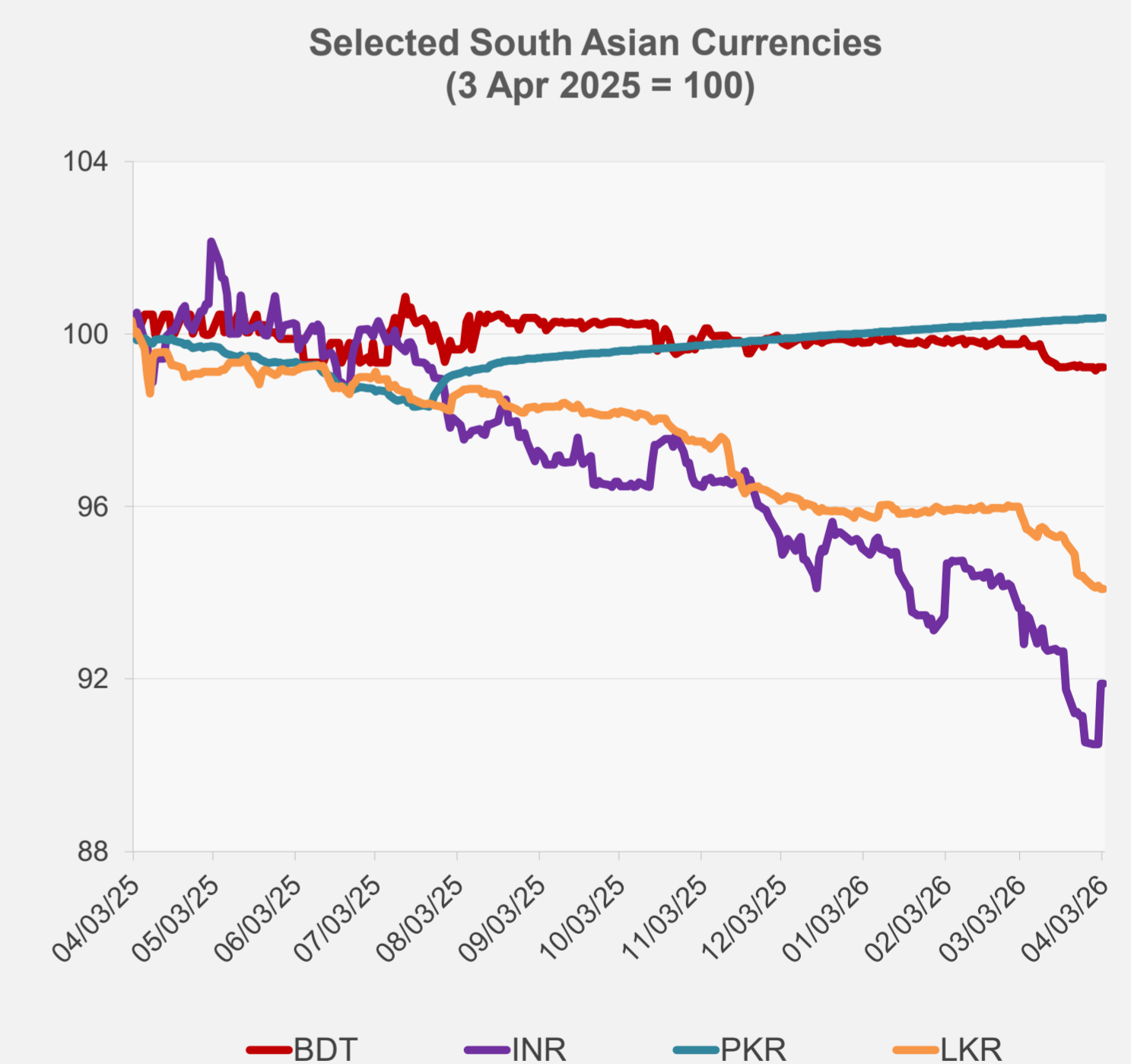
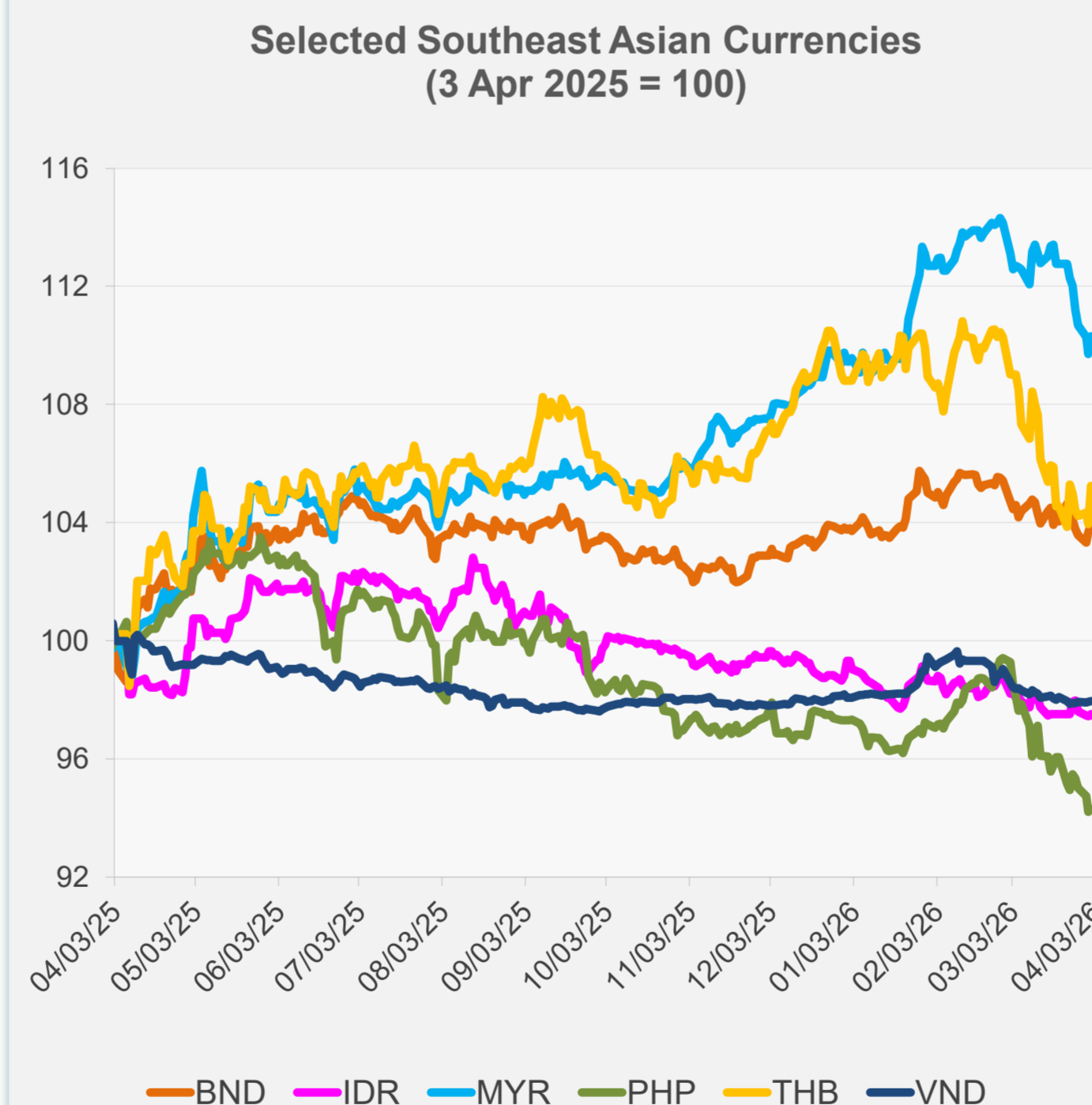


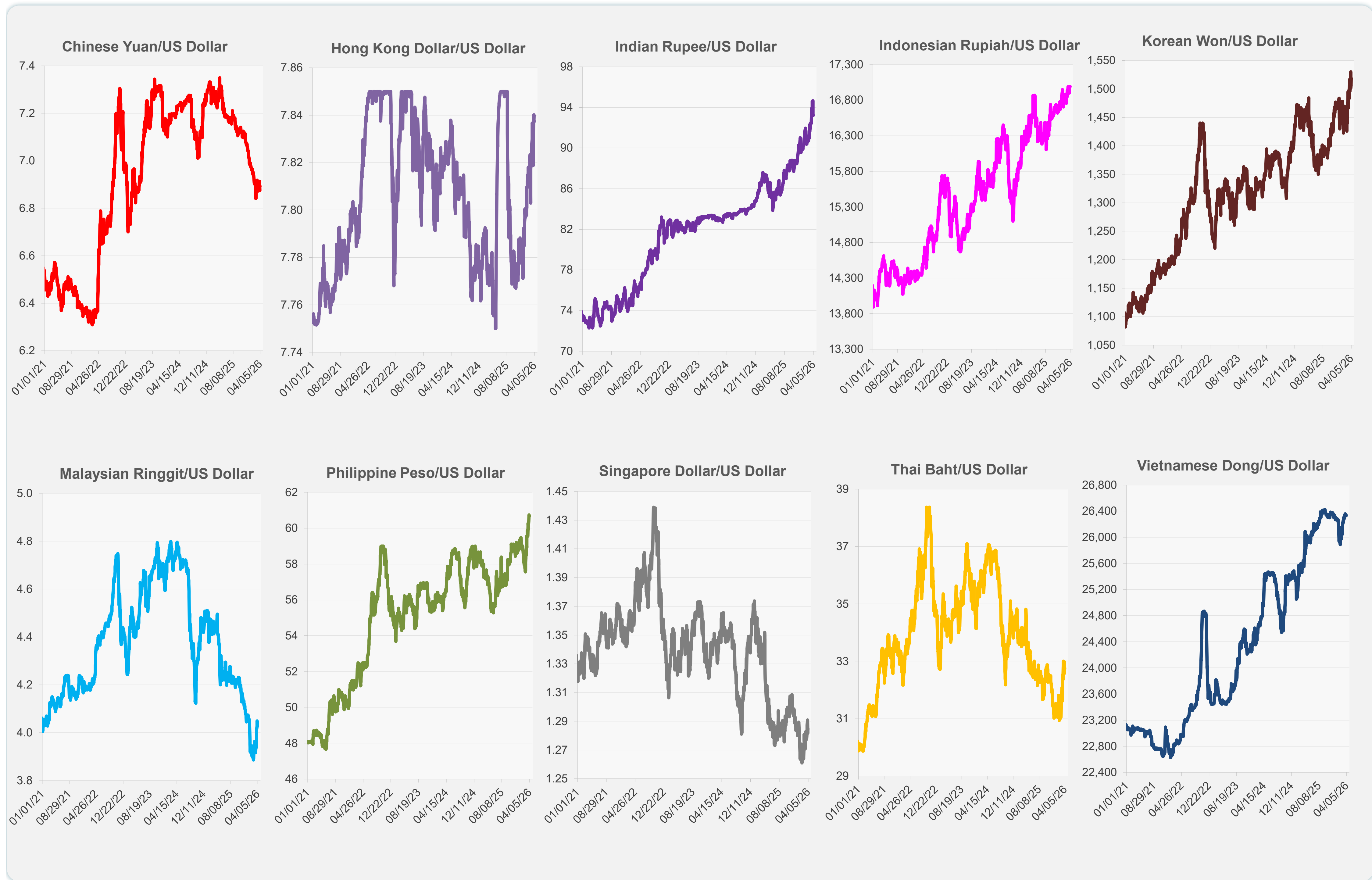
	Latest Closing	% change from Previous Day	% change from 01-Jan-26
Euro	0.87	0.00	-1.65
Japanese yen (JPY)	159.60	-0.02	-2.27
Bangladeshi taka (BDT)	123.00	0.00	-0.61
Brunei dollar (BND)	1.29	-0.05	-0.12
Chinese yuan (CNY)	6.89	0.00	1.37
Hong Kong dollar (HKD)	7.84	0.00	-0.69
Indian rupee (INR)	93.21	0.00	-3.46
Indonesian rupiah (IDR)	16,994.50	0.00	-1.88
Korean won (KRW)	1,505.20	0.96	-4.40
Malaysian ringgit (MYR)	4.04	0.00	0.47
Pakistan rupee (PKR)	279.07	0.01	0.37
Philippine peso (PHP)	60.68	0.00	-3.09
Singapore dollar (SGD)	1.28	0.00	0.11
Sri Lanka rupee (LKR)	315.50	0.00	-1.87
Taipei,China NT dollar (TWD)	31.97	0.00	-1.67
Thai baht (THB)	32.76	0.00	-3.84
Vietnamese dong (VND)	26,331.50	0.00	-0.12



NIE = Newly Industrialized Economies



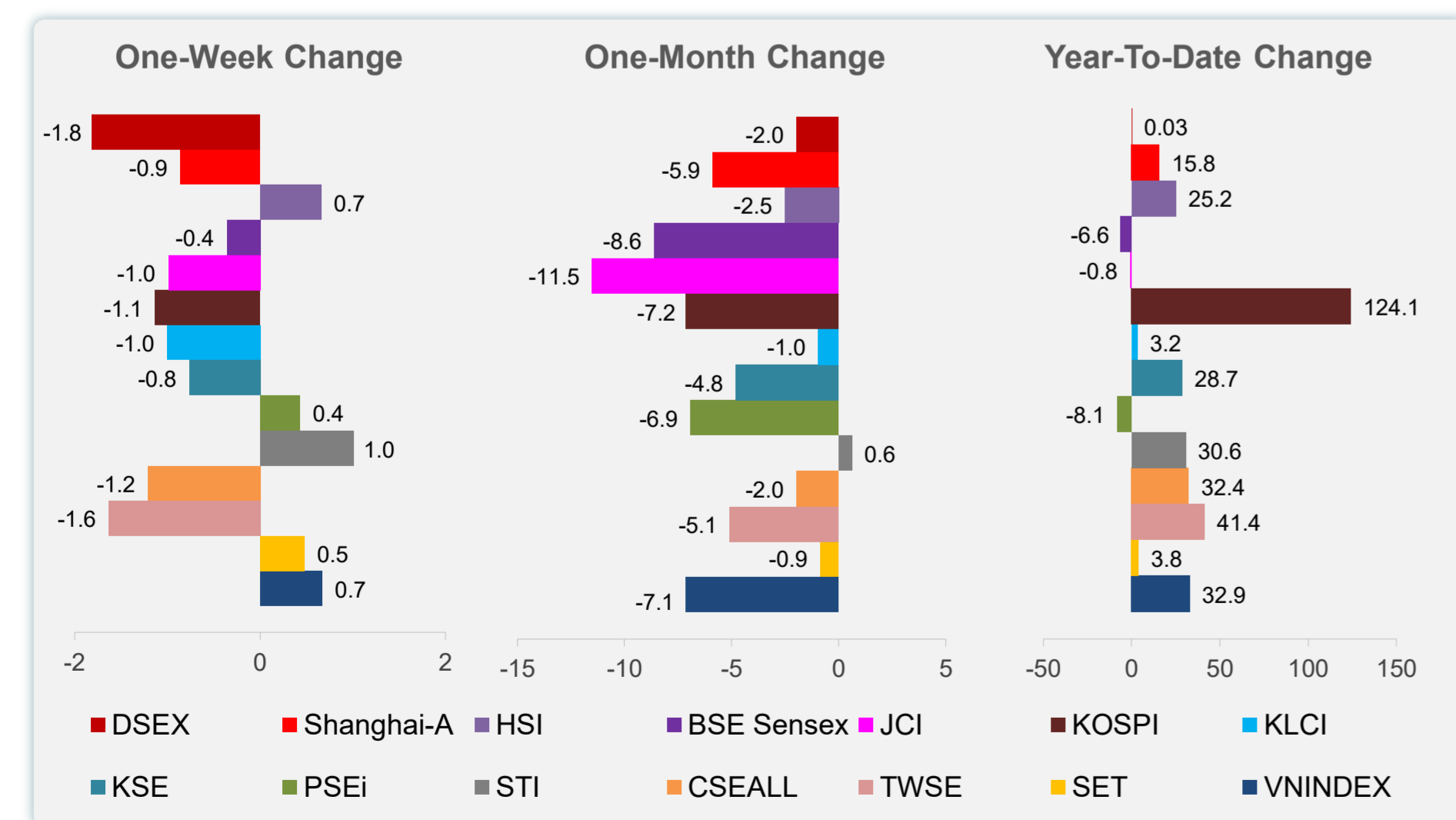
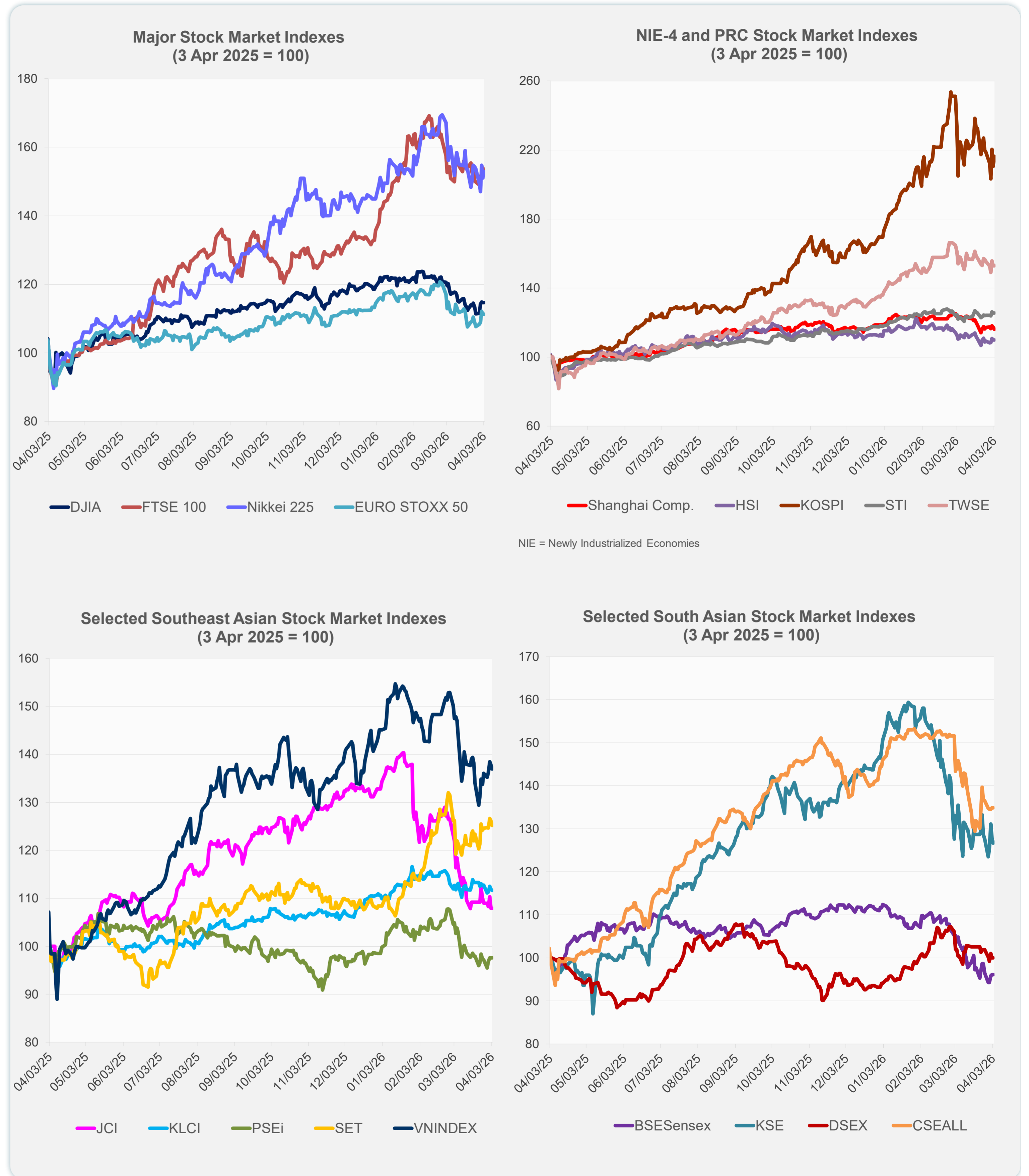
Note: Negative/Decreasing values indicate depreciation of local currency, and positive/increasing values indicate appreciation.
Source: ADB calculations using data from Bloomberg and Haver Analytics.



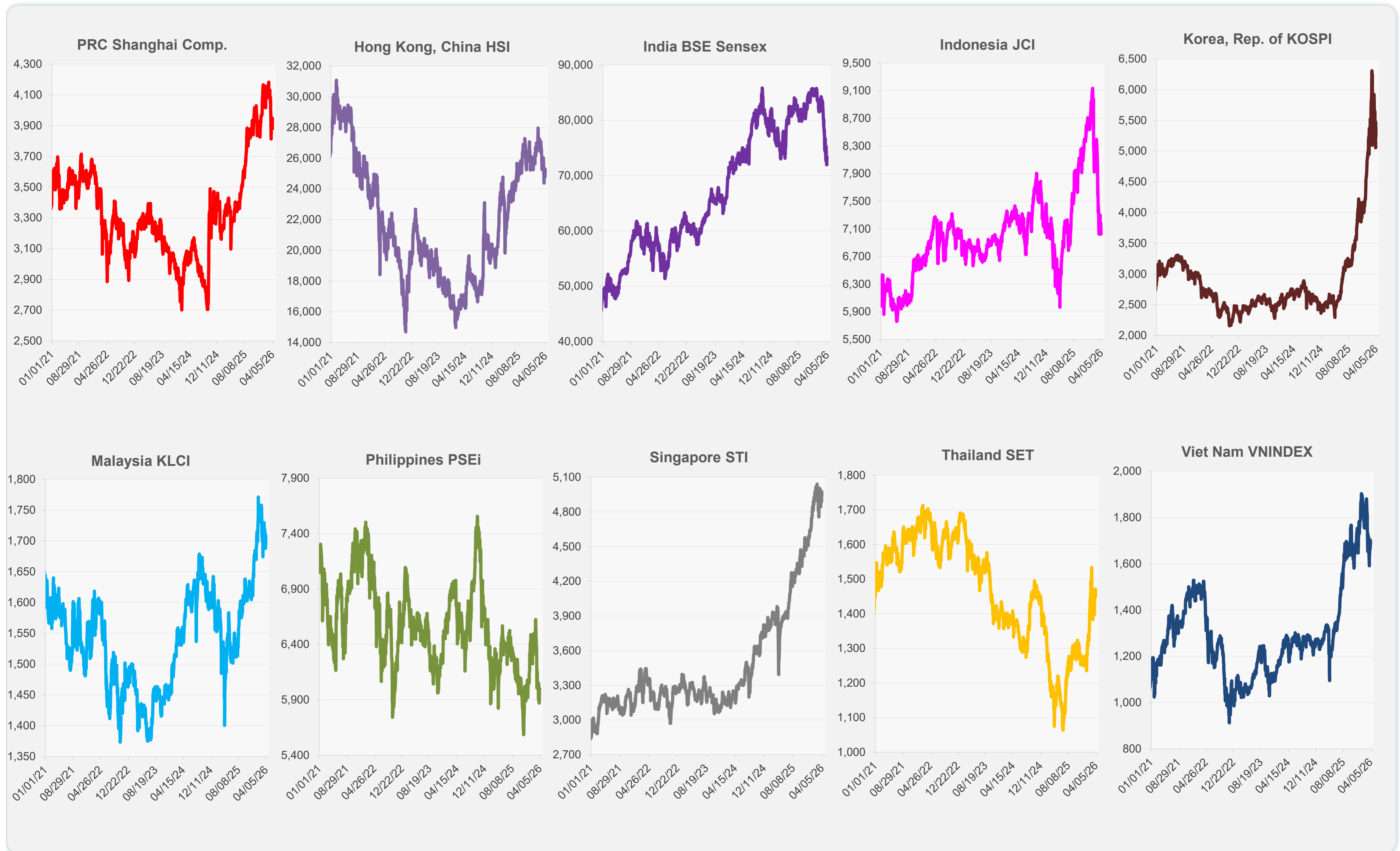
Source: Haver Analytics.

Daily Market Watch STOCK INDEXES

	Latest Closing	% change from Previous Day	% change from 01-Jan-25
US Dow Jones Ind Avg	46,504.67	0.00	9.31
US NASDAQ	21,879.18	0.00	13.30
US S&P 500	6,582.69	0.00	11.92
UK FTSE 100	12,936.35	-0.88	58.28
EURO STOXX 50	5,692.86	0.00	16.28
Japan NIKKEI 225	53,123.49	1.26	33.16
Bangladesh DSEX	5,219.74	0.00	0.03
PRC Shanghai Comp.	3,880.10	-1.00	15.76
Hong Kong, China HSI	25,116.53	0.00	25.21
India BSE Sensex	73,319.55	0.00	-6.61
Indonesia JCI	7,026.78	0.00	-0.75
Korea, Rep. of KOSPI	5,377.30	2.74	124.10
Malaysia KLCI	1,695.50	-0.16	3.24
Pakistan KSE 100	150,613.60	-0.93	28.72
Philippines PSEi	5,998.68	0.00	-8.12
Singapore STI	4,947.50	0.00	30.62
Sri Lanka CSEALL	21,117.42	0.00	32.44
Taipei, China TWSE	32,572.43	0.00	41.40
Thailand SET	1,454.00	-0.80	3.84
Viet Nam VNINDEX	1,684.04	-0.64	32.94



Sources: ADB calculations using data from Bloomberg and CEIC Data Company.



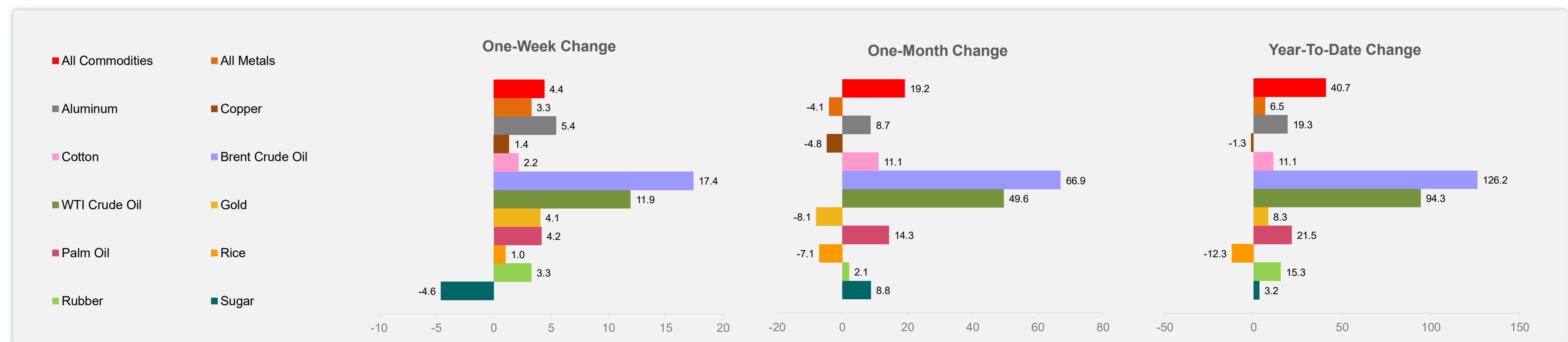
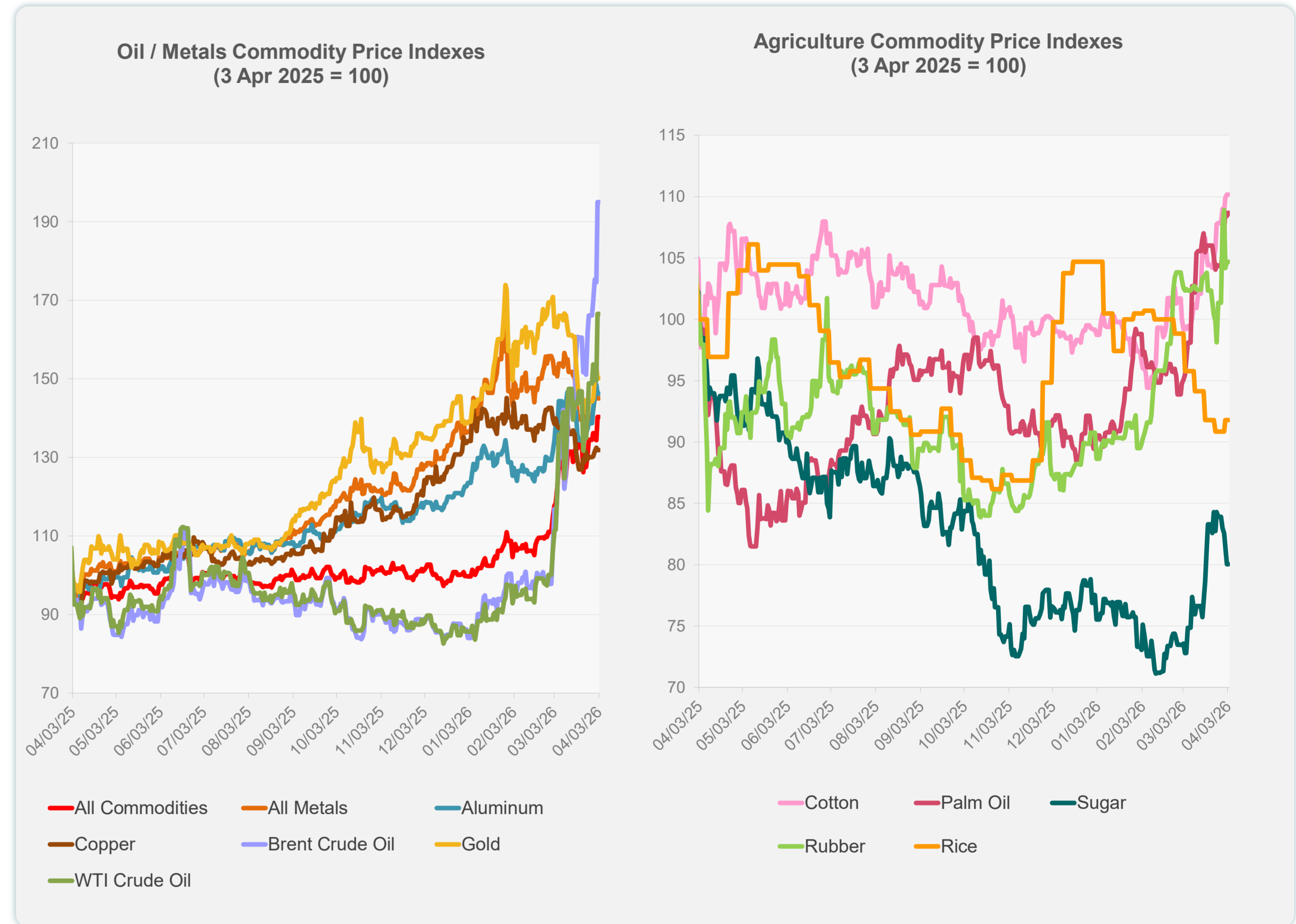
Sources: ADB calculations using data from Bloomberg and CEIC Data Company.

Daily Market Watch
COMMODITY PRICES

6 April 2026, 9:00 AM Manila

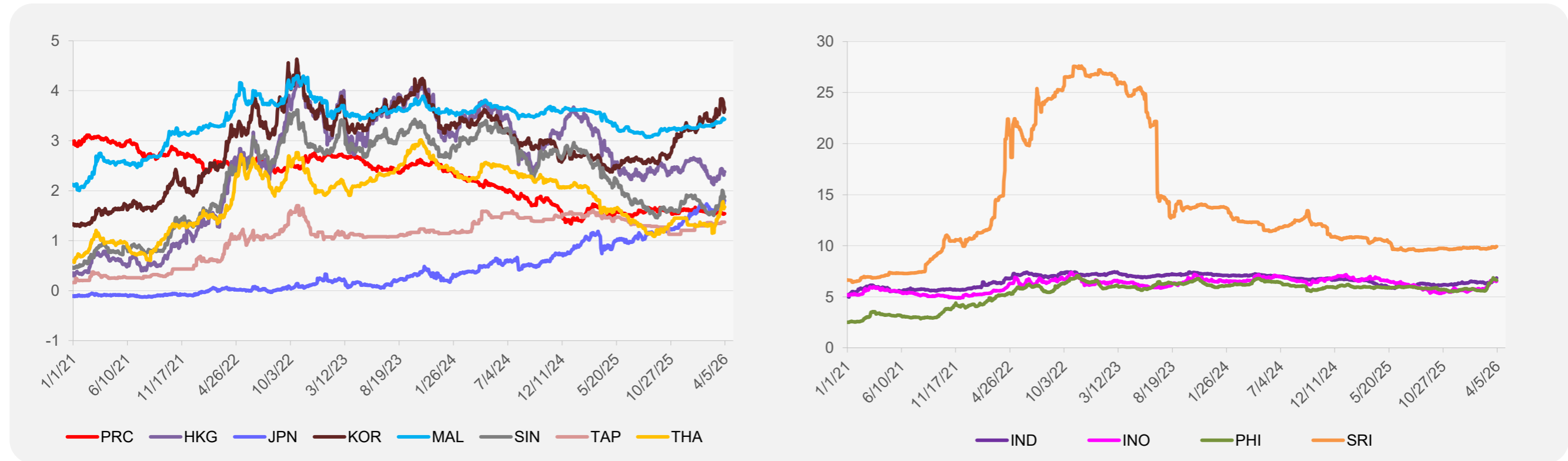
	Unit	Latest Closing	% change from Previous Day	% change from 01-Jan-26
S&P All Commodities	US\$	771.83	0.00	40.71
S&P All Metals	US\$	472.47	0.00	6.47
Aluminum	US\$/metric ton	3,539.68	0.00	19.26
Copper	US\$/metric ton	12,287.94	0.00	-1.33
Cotton	US cents/lb	68.92	0.00	11.13
Brent Crude Oil	US\$/barrel	141.26	0.00	126.22
WTI Crude Oil	US\$/barrel	111.54	0.00	94.25
Gold	US\$/troy oz	4,676.76	0.00	8.27
Palm Oil	US\$/metric tonne	1,177.05	0.24	21.51
Rice ¹	US\$/metric ton	391.00	0.00	-12.33
Rubber ²	US\$/kg	248.00	0.00	15.35
Sugar	US cents/lb	15.27	0.00	3.25

¹ Latest closing price from 1 April 2026.
² Singapore Exchange, Ribbed Smoked Sheet Rubber.

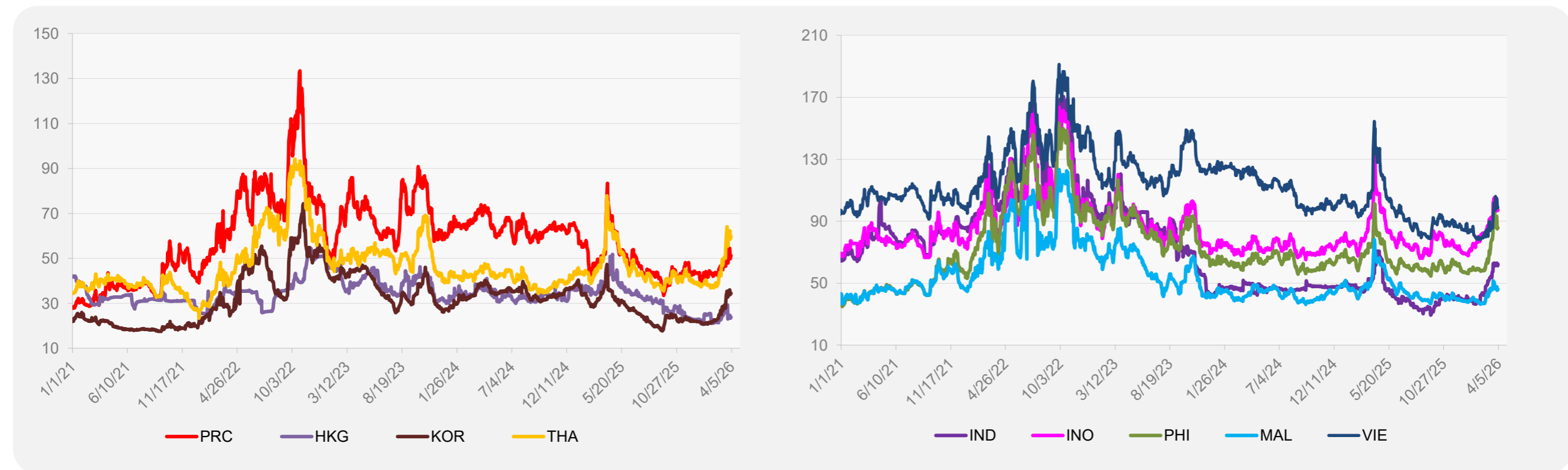


Source: ADB calculations using data from Bloomberg.

5-YEAR LOCAL CURRENCY GOVERNMENT BOND YIELDS (%)



5-YEAR CREDIT DEFAULT SWAP¹



¹ In USD and based on sovereign bonds.
Source: ADB calculations using data from Bloomberg.